

NEWS

#1

HAMBURG PROJECTS 2017

KORN air-lux®

SEAL WITH AIR. With our worldwide unique sliding door system we guarantee the best test results even under extreme wind and weather conditions.

K|O
R|N

POWERFUL AND DISTINCTIVE ARCHITECTURE A DREAM OF LIVING CLOSE TO THE RIVER ELBE

FACTS

DESIGN / IMPLEMENTATION PLANNING /
CONSTRUCTION MANAGEMENT

DFZ Architekten
Generalplaner

COMPLETION
2017

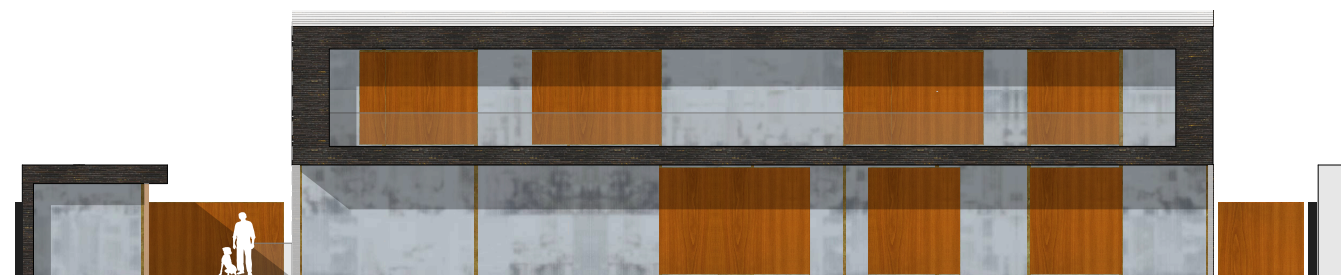
KORN *air-lux*.

Jointly with the renowned architectural office DFZ in Hamburg we are presently realizing this very modern villa project not far from the river Elbe. A powerful language of forms combined with finest materials allows visions and dreams to become true.

Towards the street, the building is appearing reluctant, even reserved. However, the dynamic of the building structure lets us divine how the façade continues towards the southern side. The garden opens widely and this gives a fantastic experience of space in the inner side of the house. Due to the generously chosen pattern of the KORN *air-lux* façade the outer and the inner space are melting together.

All units will be mounted flushly to the ceiling, soil and reveal. Two huge corner sliders with weights of 1100 kg each are opening the dining area towards the sun terrace – elegantly and without a noise – thanks to a motor drive. Some units will obtain a slot ventilation function as well as fast motorized insect screens. This allows you to enjoy warm summer evenings – though keeping your light on and a sliding sash opened.

Thanks to the best test results due to the patented inflatable seal, as well as 10 years of warranty and intensive consulting, we have been able to convince the builder as well as the architect.



View from south



East elevation view



West elevation view

SPECIAL FEATURES

- Overall area of windows: 275 m²
- 12 sliders, one of them as a corner slide system with wall pocket
- Multi-part turn and tilt units, partly covered with wood
- Wood-aluminium sliders in the wellness area

PRODUCT

- KORN *air-lux* sliding door systems
- KORN *IP55* integral sliding door systems

MODERNIZATION OF A CLASSIC BUILDING ON THE ELBCHAUSSEE



View from north – Access side

FACTS

DESIGN / IMPLEMENTATION PLANNING
ORP Architekten

COMPLETION
2017

KORN **air-lux**
KORN LIGNUM

This listed historical building was converted into an office and prestige showroom by means of an aesthetic modernization.

The challenge the Hamburg based architects of ORP Architekten faced, while being assigned the task of the overall refurbishment and expansion, was to do justice to the historic building while also meeting the requirements of its new purpose by adding further storeys to the building.

Our task was to produce the classic wooden windows to comply with the legislation for the protection of historic monuments and at the same time to supply slim and modern-looking frames with large-area glazing for the additional storeys, which had to meet substantial structural requirements. After detailed discussions, the architect and the owner of the building opted for our partner product KORN *air-lux*, a system that offers a number of advantages: thanks to its patented, inflatable seal, it is 100 % wind-, sound- and rainproof.

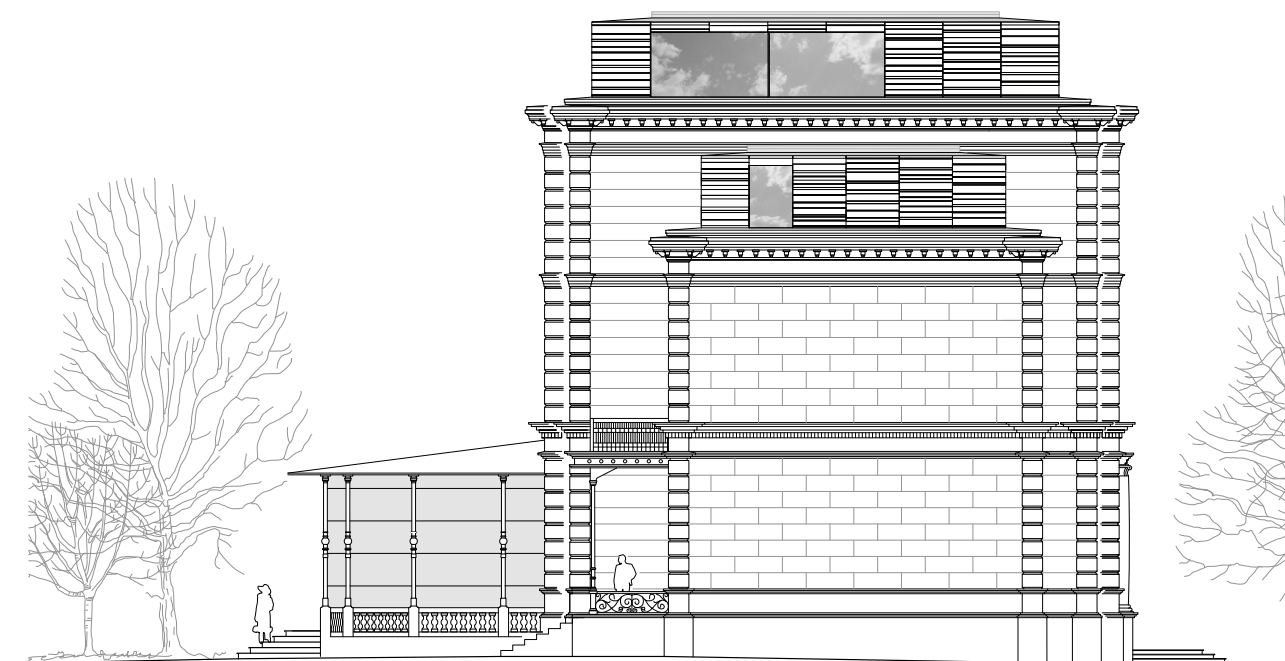
The large window units we installed are powered by electric motors. They have a maximum area of 11 m² and weigh up to 850 kg, in some cases taking the form of stepped glazing with corner slides. Thanks to the excellent collaboration between our project management team, our installation team and the construction supervisors on site and by using special installation equipment, all 29 panes were installed perfectly intact. All 86 wooden windows with a maximum size of 1,64 m × 3,87 m were also installed professionally and on schedule in final painted state.

ADDITIONAL STOREY

- 8 KORN *air-lux* sliding door systems with 9 electrically powered sliding sashes and 1 unit with post-free butt glazed section
- 27 oversized glass panes with triple insulated glass
- 2 butt glazed corners
- Overall area of façade 296 m²
- Largest pane: 3,64 m × 3,0 m, 10,92 m², 824 kg
- Solar control glazing as low iron glass, Ug 0,6 W / m² K

EXISTING BUILDING

- 86 KORN LIGNUM window and door units made of wood, 68 of these elements with electrically powered skylights
- Maximum dimensions: 1,64 m × 3,87 m
- 45 dB sound proofing on road-facing side
- Solar control glass on river-facing side



East elevation view

KORN Windows & Doors GmbH

Von-Linné-Straße 1
D-22880 Wedel / Hamburg
Germany

T +49 (0) 41 03 91 60-0
info@korn-windows.com
www.korn-windows.com